



# VISIBLE LIGHT LINES

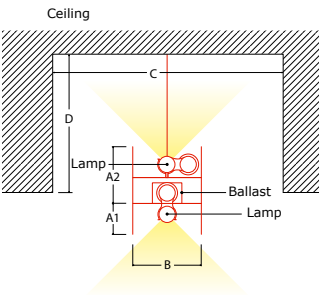
## APPLICATION AND PROPERTIES

Lumco lamps are pure in shape and form and can also be used perfectly well as visible units providing direct lighting. They can be used in a fun way and create a pattern of lines throughout the area. In addition to being good to look at, they are also particularly functional. The lamps trace continuous lines without shadows and follow the shape of the architecture. They also provide powerful direct, high-output lighting. LT8-B8 and LT8-B5 lamps in particular are extremely well suited to be used as visible light lines. They give off a perfect light level and there is very little chance of being dazzled. Because they have a long service life and low maintenance costs, they are also ideal for installing in high spaces. The lamps are usually fitted on continuous profiles or reflectors so that ballasts, cabling and electrodes can be hidden neatly away. If required, the whole unit can be enclosed in polycarbonate to obtain a softer direct light.

v Living Tomorrow - Brussels - Set-up V1  
Architects: Architectenbureau Belien  
Interior Designer: Vittorio Simoni

### V1

INDIRECT + DIRECT SET-UP WITH LAMPS MOUNTED ON H-PROFILES HANGING FROM THE CEILING



#### 2 rows of lamps type LT5-B5

Ideal lighting for use in an entrance hall, corridor or office. If required, the lower profile can be enclosed with an opaque polycarbonate diffuser so that the lamps are not visible. To be able to use the 2 rows of lamps separately, they have to be powered on separate circuits.

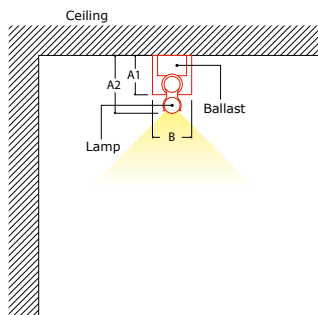
	Opt.
A1	50
A2	70
B	80
C	250
D	200

< Living Tomorrow - Brussels - Set-up V2  
Architects: Architectenbureau Belien  
Interior Designer: Vittorio Simoni



## V2

### LAMP MOUNTED ON A PROFILE FITTED TO THE CEILING



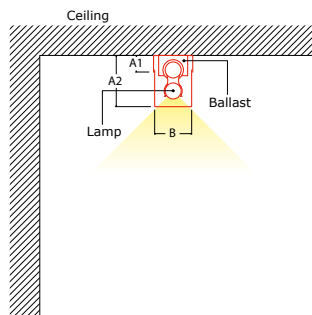
#### 1 row of lamps type LT8-B5

Lamps are fitted on to the profile. Electrodes, ballasts and cabling are concealed in the profile. They make the perfect solution for creating straight continuous light lines or straight geometric light figures.

	Min	Opt.
A1	40	45
A2	60 (with LT5-B5)	75
B	40	60

## V3

### LAMP MOUNTED ON A PROFILE FITTED TO THE CEILING



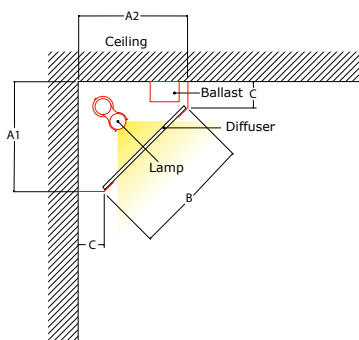
#### 1 row of lamps type LT8-B8

Lamps are fitted on a U-profile. Electrodes, ballasts and cabling are concealed in the profile. The U-profile is enclosed by a polycarbonate diffuser, which is opaque so that the lamps are not directly visible.

	Opt.
A1	25
A2	82
B	65

## V4

### LAMP MOUNTED ON CORNER PROFILE ENCLOSED BY POLYCARBONATE DIFFUSER



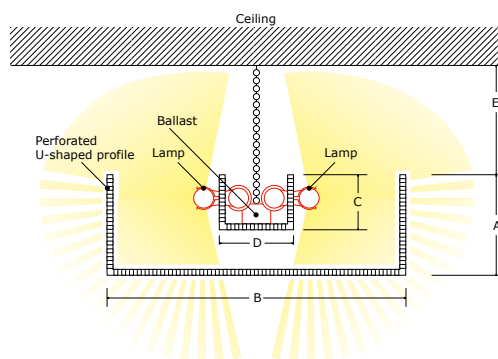
#### 1 row of lamps type LT5-B5

Other variants of this set-up are possible: e.g. 2 rows of lamps in parallel. The polycarbonate diffuser can also be printed with words or logos.

	Opt.
A1	80
A2	80
B	90
C	20

## V5

### INDIRECT + DIRECT SET-UP: LAMPS MOUNTED IN PERFORATED U-PROFILE HANGING FROM THE CEILING



#### 2 rows of lamps type LT8-B5

This aluminium fitting hangs approximately 20cm from the ceiling and shines a direct light through the perforated U-shaped profile and at the same time shines indirect light on to the ceiling. The lighting effect obtained is very suitable for work areas with computers.

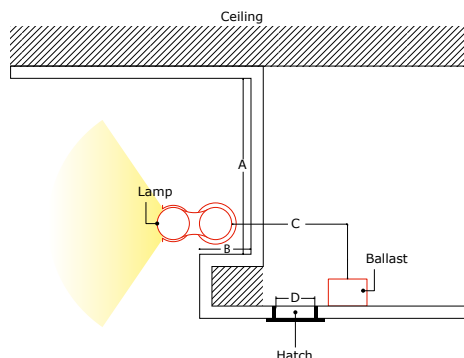
	Opt.
A	80
B	200
C	40
D	80
E	200





## V6

### LAMP MOUNTED ON A WALL WITHOUT RECESS



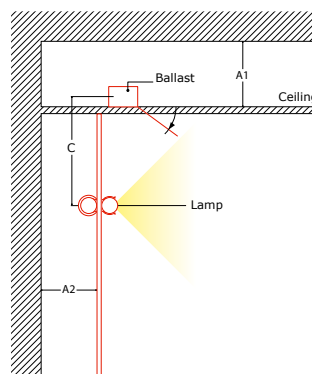
#### 1 row of lamps type LT8-B8

This set-up is attractive if no recess can be made in the ceiling. The lamps are mounted directly on the wall and thanks to board B, the electrodes are not visible. The ballast is fitted above the false ceiling at a maximum distance of 50cm from the lamp.

	Opt.
A	250
B	50
C	500
D	35

## V7

### LAMP MOUNTED ON A FALSE WALL OR CEILING, ELECTRODE BUILT IN BEHIND THE FALSE WALL OR CEILING



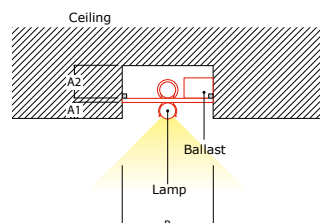
#### 1 row of lamps type LT8-B5 / LT8-R5

This set-up is ideal to emphasise the shape of a wall, particularly with curved walls. The ballast is mounted above the false ceiling at a maximum distance of 50cm from the lamp (electrode).

	Min	Opt.
A1	40	50
A2	40	50
C	200	500

## V8

### LAMP FULLY RECESSED INTO A FALSE CEILING: ASSEMBLY ON PLATE IN U-SHAPED RECESS



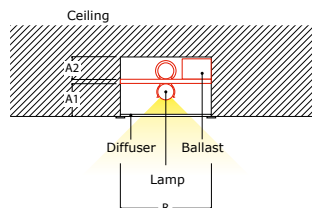
#### 1 row of lamps type LT8-B8

The lamp is mounted on a white reflector fitted using 2 strips (20 x 25mm) attached to the ceiling. Ballasts, electrodes and cabling sit above the plate. This set-up is also possible for curved shapes and corner shapes, in which case the plate is laser-cut to the required shape.

	Min	Opt.
A1	30	40
A2	35	50
B	60	130

## V9

### LAMP FULLY RECESSED INTO A FALSE CEILING: ASSEMBLY ON PLATE IN U-SHAPED RECESS COVERED WITH A POLYCARBONATE DIFFUSER



#### 1 row of lamps type LT8-B5

In this set-up, the lamp is fitted a little deeper into the U-shaped recess and covered by an opaque or coloured polycarbonate diffuser. The diffuser is hung from the ceiling using small profiles.

	Min	Opt.
A1	40	60
A2	35	50
B	60	130

